

Burgess Peterson Academy

**Science of Reading
and Dyslexia Update**

2024-2025



State Initiatives

- **Georgia Early Literacy Act (HB 538)**
- **Senate Bill 48**

Georgia Department of Education

Georgia Literacy Academy Courses



November 2023

Dyslexia Informational Handbook

Guidance for Local School Systems



Updated November 22, 2019

House Bill 538: Georgia Early Literacy Act

In 2023, Georgia took major steps to enhance literacy outcomes by passing the **Georgia Literacy Act**, a bill aimed at improving early reading instruction grounded in the Science of Reading.

Georgia's first comprehensive early literacy law.



House Bill 538: Georgia Early Literacy Act

Beginning August 1, 2024

1

High Quality
Instructional
Materials

2

Universal
Reading
Screeners

3

Tiered
Interventions

4

Training for
Teachers

5

Teacher
Certification
Standards



What is Structured Literacy?

Structured literacy is a teaching approach for oral and written language that's based on how children learn to read.

It's an evidence-based method that's especially helpful for children with reading challenges like dyslexia, but it can also help all students improve their reading skills.



Structured Literacy Implementation Timeline at BPA

2016

All certified staff was trained in the Orton-Gillingham approach by REAP.

2018

Expanded the Reading Specialist role to include supporting teachers.

2024

Hired a full time Reading Teacher to work with students who exhibit characteristics of dyslexia.

2017

Created a Reading Specialist position to teach whole group and small group OG phonics lessons.

2020

Hired a full time Literacy Coach to support our Literacy Program



Structured Literacy at BPA

We continue to expand our Structured Literacy program through...

Curriculum Support

Instructional Support

Professional Development &
Training



Senate Bill 48

Georgia's Dyslexia Law

In 2019, Georgia passed the state's dyslexia law. This law set common language for our state about what dyslexia is, developed a state dyslexia handbook, and set requirements for teachers and schools about dyslexia.



What is Dyslexia?

Dyslexia is a specific learning disability that is neurobiological in origin. It is characterized by difficulties with accurate and fluent word recognition and by poor spelling and decoding abilities. These difficulties typically result from a deficit in the phonological component of language that is often unexpected in relation to other cognitive abilities and the provision of effective classroom instruction. Secondary consequences may include problems in reading comprehension and reduced reading experience that can impede growth of vocabulary and background knowledge.¹

Senate Bill 48

1

Dyslexia
screening for
K-3

2

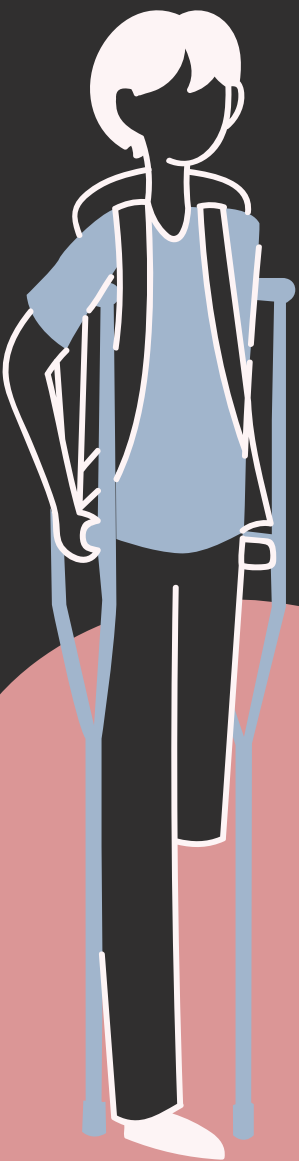
Intervention
for students
who flag as
possibly
having
characteristics
of dyslexia.

3

Dyslexia
endorsement
for staff

4

Report number
of students
screened,
flagged, and
interventions





BPA Progress for Dyslexia Law

- **We screened 324 BPA students K-3 for Dyslexia.**
- **Students who flagged began receiving interventions on September 23rd after their parents were notified and given an opt-out choice.**
- **14 staff have earned the dyslexia endorsement**

BPA's Dyslexia Flag Information



**21 BPA
students
flagged in
grades k-3**

**4 parents
opted out of
receiving
extra
support.**

**5 students who
flagged
already receive
DSE academic
support.**

**12 flagged
students
receive
intervention
outside of the
classroom**

Additional Support

16 BPA students were identified to also receive support, using CORE Phonics Screener, parent concerns, or MAP Reading Fluency Flags.



Additional Support



- 28 BPA students are supported in total.
- 2 small group (2-4) sessions a week
- 45 minutes each session.
- Orton Gillingham phonics lessons with embedded phonemic awareness.
- Bi-weekly progress monitoring along with weekly dictation probes.



BPA NEXT STEPS

Students who are being served will be:

- Assessed using Map and other screeners to monitor progress.**
- Conferences with parents to explain progress and see who should continue support, revise support, or increase support.**

Other students will be:

- Monitor other students' map data and further screen any students of concern to see if other students need support.**

to wrap up

Georgia has passed two literacy laws that impact schools.

Burgess Peterson Academy has made strides in improving our practices to support both sets of law requirements.

We have a clear plan for next steps.

